



Powerglide Transmissions

The two speed powerglide transmission is the most popular choice for sportsman heads-up and bracket racing classes. It's simple and strong design makes it a great solution for many applications. New, redesigned replacement and upgrade components are available for practically all pieces of the powerglide assembly. Contact a specialist at BTE for a specific powerglide for your application.

ASSEMBLED POWERGLIDE TRANSMISSIONS

NEW

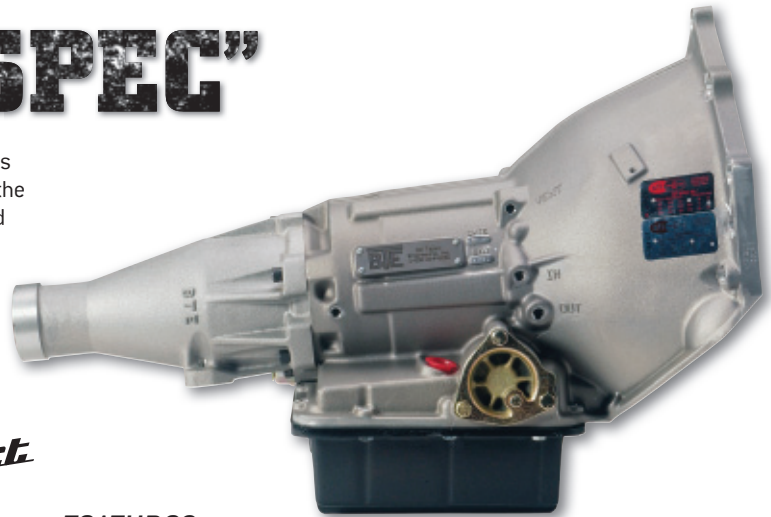
"OUTLAW SPEC"

BTE's new "Outlaw Spec" Powerglide 2.0 Transmission is the strongest we've ever built and is now available for the fastest outlaw and pro-mod cars in the world. Designed for cars exceeding 2400+ horsepower. Dyno-tested.

NEW

Special Price **\$4500⁰⁰**

*Signature
Racing Product*



FEATURES

NEW BTE Magnum SFI Approved Case		Roller Bearings and a Planetary Priority Oiling System	
Forged and Oversized (TH400) 4340 Output Shaft		NEW Aermet 48 Spline Input Shaft (1.125" diameter)	
Mega Racing Band		1.80 Vacu-Melt 9310 Mikronite™ Gears	
BTE Super-Cool Deep Aluminum Pan		NEW Steel Band Adjustment Screw	
Billet Two Ring Servo and Performance Servo Spring		Roller Tail housing/Rear Cover	
NEW 10 Clutch High-Gear Drum with Forged Steel Clutch Hub		NEW BTE High Volume Pump	
Two-Piece Shift Lever		BTE Top Sportsman High Pressure Transbrake Valve body	

ASSEMBLED POWERGLIDE TRANSMISSIONS

*Signature
Racing Product*



Top Sportsman / Top Dragster

FEATURES:

- New SFI Approved Aftermarket Case
- Ringless Vasco Turbo Spline Input Shaft
- Mega Racing Band
- Two Ring Servo
- Performance Servo Spring
- Coated Deep Aluminum Pan
- BTE Straight Cut Gear set (Available in 1.80, 1.98, and 1.69 ratios)
- Roller Tail housing/Rear Cover
- New BTE High Volume Pump
- Roller Governor Support
- 10 clutch drum
- BTE Top Sportsman High Pressure Transbrake Valve body
- Dyno-tested

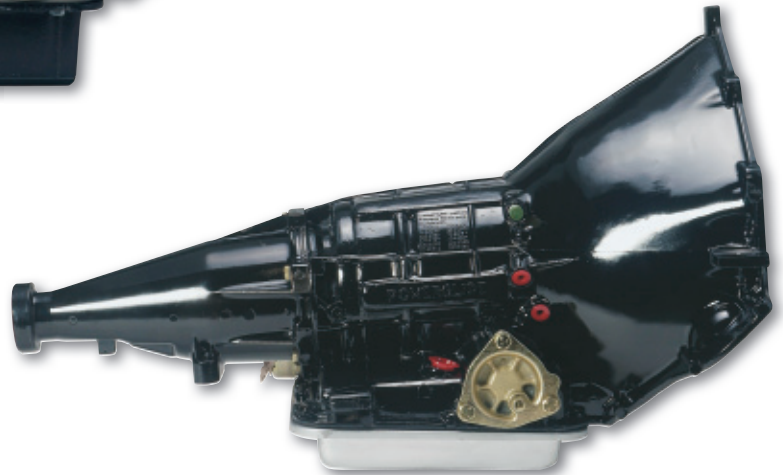
\$3595⁹⁹

Bracket Powerglide

FEATURES:

- 1.76 Gear set w/ 4340 forged output shaft & housing
- Steel Clutch Hub w/ 5 clutch pack
- New BTE High Volume Pump
- Two ring servo
- BTE Bracket Transbrake Valve body
- Kevlar lined Band
- Dyno-tested

\$1024⁹⁹



*Signature
Racing Product*



NEW
FEATURES
2-Year Warranty
On All Gear Sets

Powerglide Gear Sets

The backbone of the powerglide, the planetary gear set and output shaft require a solid assembly. All output shafts are made from 4340 forged steel to accommodate high power and heavy vehicles. For extreme applications, a Magnum output shaft, sized to TH400 dimensions, is available. The gears are machined in-house from straight (spur) cut 9310 vacu-melt steel and heat treated. Additionally, all gear sets are available in short and standard lengths.

1.80, 1.98, 1.69 Straight Cut Gear Sets

\$999⁹⁵

1.80, 1.98, 1.69 Straight Cut Gear Sets (Magnum)

\$1395⁹⁵

NEW

Ductile Iron Gear Set Carrier

2474BA **\$100⁰⁰**



Pinion Kit

Includes pinions, locking plate, washers & bearings.

247501 **\$74⁹⁵**





NEW

High Volume Powerglide Pump

BTE's all new high volume pump solves the headaches of transbrake inconsistency or "rolling" when staging a drag racing vehicle. Increased fluid volume at lower RPMs increases the holding power of the powerglide's transbrake. This pump is used in all BTE powerglide transmissions.

FEATURES:

- 7 bolt clamping design to improve strength and sealing
- Flanged 4340 steel stator support tube, with bushing supports to accommodate any of our input shaft designs
- Enlarged and coated gears to improve pump performance

*Signature
Racing Product.*

243510

\$429⁹⁵

NEW

Powerglide Transbrake Valve Bodies

BTE's powerglide transbrake valve bodies are made from 100% new castings, valves, and include a new American made solenoid. These units are designed specifically for racing, and do not use the OEM casting. The Top Sportsman model is designed for higher pressure output to increase clutch performance.

248260 Bracket Transbrake

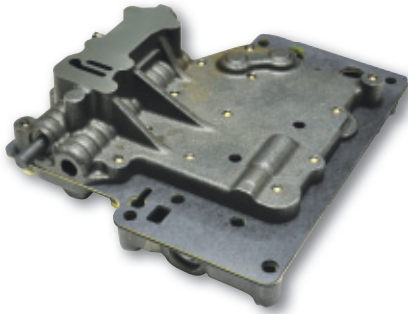
\$329⁹⁵

228260 Pro Transbrake (push button reverse)

\$329⁹⁵

228270 Top Sportsman Transbrake (push button reverse)

\$389⁹⁵



Powerglide High Gear Drum

This new steel drum replaces the smaller OEM drum, giving the transmission additional clutch capacity and surface area for low gear band application. BTE also offers new and relined low gear bands for all high performance powerglides.

243920 Assembled 10 Clutch Drum w/ Roller Bearing

\$425⁰⁰

Replacement Solenoid

2498 **\$89⁹⁹**



1 Piece Shift Lever

2484 **\$10⁹⁵**



2 Piece Shift Lever

248450 **\$14⁹⁹**



NEW

Forged Steel Clutch Hub

(10 clutch capacity)

248320 **\$78⁰⁰**



Low Gear Band

Kevlar Relined Band

2451

\$54⁹⁵

Mega Band (Lifetime Warranty)

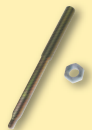
245150

\$190⁰⁰



4340 Steel Band Adjustment Screw

245101 **\$17⁵⁰**



Powerglide Servo Kits

Upgrading the OEM servo components in the Powerglide improve shift quality and transbrake application. Servo upgrades are recommended for all performance applications.

248501 2 Ring Servo (Metal Rings)

\$39⁹⁵

248520 Billet Servo Cover

\$39⁹⁵

248590 High Performance Servo Spring

\$24⁰⁰

248595 New Servo Shaft

\$10⁰⁰



POWERGLIDE TRANSMISSION COMPONENTS

Powerglide Input Shafts



Available in a variety of high quality metals and designs, BTE powerglide universal length input shafts solve a critical design flaw in stock powerglide transmissions. The Vasco steel shafts are the strongest currently available.

2518 Powerglide Splined

\$114⁹⁵

2519 Turbo Splined

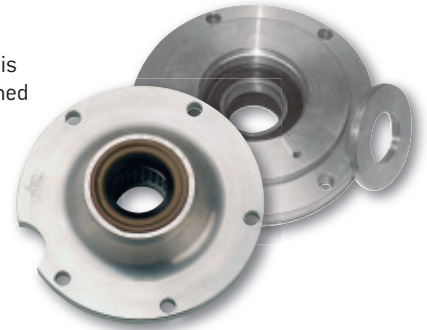
\$114⁹⁵

251913 Turbo Splined Ringless Vasco

\$284⁹⁵

Shorty Cover

In dragster transmissions, this cover is paired with a shortened transmission output shaft to decrease the overall length of the transmission. Cover includes installed seal and roller bearing.



2464 Shorty Cover

\$109⁹⁵

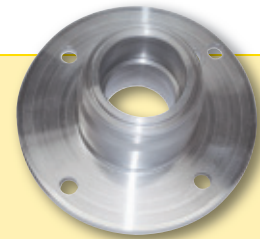
246402 Shorty Cover w/Sealed Bearing

\$149⁹⁵

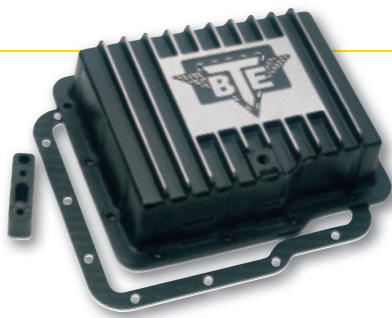
Powerglide Case Insert

BTE Racing's Powerglide case insert is a quick and economical way to repair some types of aftermarket cases that have broken where the output shaft bushing or bearing ride is located. In the past if this happened all you could do was to shell out more cash for another aftermarket Powerglide case. With the BTE Racing case insert, you can keep that extra money in your pocket for the next buy back round. The development and design team at BTE Racing is always looking for ways to keep the racer "going down the track."

*Signature
Racing Product.*



2479 **\$249⁹⁹**



Aluminum Deep Pans

This cast aluminum deep pan adds two extra quarts of transmission fluid, reduces heat retention, and increases the strength of the transmission case. Pan includes gasket, bolts, and filter extension.

258200 Deep Pan w/Kit

\$89⁹⁵

258210 Black Coated Deep Pan w/Kit

\$94⁹⁵

Roller Governor Support

The roller governor support replaces the OEM component with this lighter and optimized aluminum piece. The installed roller bearing reduces friction and heat.



2486 **\$63⁹⁵**

Roller Tail Housing

BTE's roller tail housing is made from strong, cast aluminum. An installed roller bearing reduces friction and heat.



PGH-4 **\$145⁰⁰**

POWERGLIDE TRANSMISSION COMPONENTS

Overflow Tank

This new overflow tank meets requirements for Top Dragster and Top Sportsman classes. Neatly fitting adjacent to the pan and beneath the case, this kit includes all needed hardware for immediate installation. The tank prevents the venting of slippery transmission fluid onto the racing surface.

940500 **\$94⁹⁵**



Powerglide Safety Shields

This component has a heat-treated 6061-T6 aluminum construction with a unique 4" wide strap that bolts directly to the transmission. The transmission shields are SFI approved and have three mounting brackets. These shields allow air to circulate around the transmission, unlike transmission blankets. In addition, these have an excellent fit making them easier to mount than other shields. The steel flexplate shield is SFI certified and is powdercoated to prevent corrosion or rust.

- 947000 Powerglide Shield w/Satin Finish **\$89⁹⁵**
- 947001 Powerglide Shield w/Red Powdercoat **\$89⁹⁵**
- 947002 Powerglide Shield w/Blue Powdercoat **\$89⁹⁵**
- 947500 Flexplate Shield w/Silver Powdercoat **\$89⁹⁵**



Transmission Coolers

Because of the tremendous heat generated in an automatic transmission, an auxiliary transmission fluid cooler is an economical way to help protect against costly transmission repairs.

Automatic transmission fluid cools, lubricates, and cleans internal transmission components. When transmission temperatures exceed 200°F, the ability of the ATF to perform is greatly diminished. Subsequently, the life span of the fluid, seals, and moving parts are significantly reduced. Higher internal temperatures also increase the wear rate of friction and clutch plates.

Excessive transmission heat is caused by the following conditions:

- Racing
- Towing
- Climbing Steep Grades
- Stop and Go Traffic
- Hot Driving Conditions

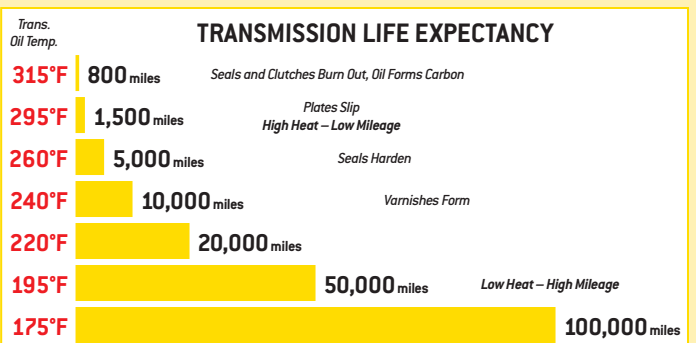
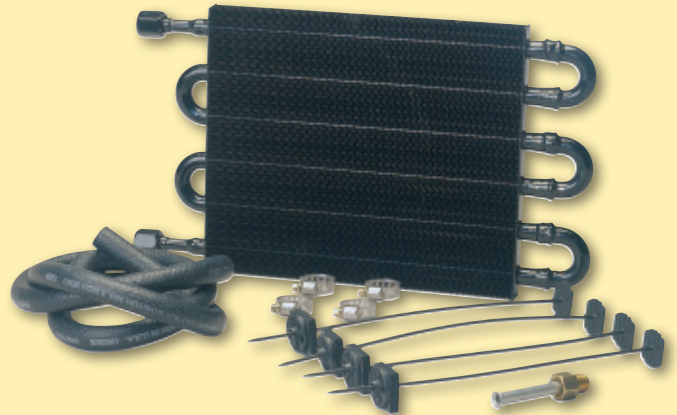
Our transmission oil coolers can reduce the ATF's temperature by as much as 60°F. A reduction of just 20°F can double the life of an automatic transmission, the fluid, and all internal parts.

FEATURES:

- Fittings for maximum reliability (GAN)
- All aluminum lightweight construction
- Electro-statically powder coated to prevent corrosion
- Includes installation kit

- 9450 Height/7, Length/12, Core/9
- 9452 Height/7, Length/15, Core/12
- 9454 Height/10, Length/15, Core/12

\$58⁹⁵
\$61⁹⁵
\$61⁹⁵





High Performance Clutch Plates

BTE High Performance Clutch Plates are great for both racing and street strip applications. BTE Clutch Plates provides a high coefficient of friction and high temperature resistance. Friction clutches have grooved surface areas to improve clutch apply time.

HIGH PERFORMANCE FRICTIONS

204000 High, .098, 5 Each **\$19⁹⁵**
 204001 Super Thin, .060, 8 Each **\$36⁹⁵**
 204100 Reverse, .098, 5 Each **\$21⁹⁹**

STEEL PLATES

204002 High, .070, 6 Each **\$14⁹⁹**
 204200 Super Thin, .060, 8 Each **\$27⁹⁵**
 204102 Reverse, .070, 5 Each **\$12²⁹**

Locking Dipsticks

This locking dipstick and filler tube remain attached and locked under the most severe applications. The included "top hat" gasket is an improvement over OEM o-ring style sealants.

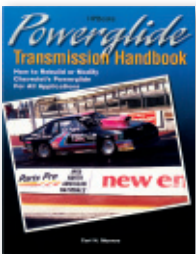


223850 Standard Length OEM Case **\$32⁹⁵**
 223860 Standard Length Aftermarket Case **\$32⁹⁵**
 223950 Shorty Dragster **\$32⁹⁵**
 223960 Shorty Altered **\$32⁹⁵**
 223870 Flexible Firewall Mount **\$59⁶⁹**

Super Filter Kit

BTE's extra flow filter for the P/G increases filtering capacity and fluid volume thus increasing transmission efficiency. Our filter kit comes with all necessary installation hardware.

248800 Super Filter Kit **\$29⁹⁵**
 TRNFLT54885 Replacement Filter **\$14⁰⁰**



Powerglide Transmission Manual

BTE offers both the novice and the experienced builder the industry standard on Powerglides from HP Books. This 234 page industry standard should provide you with all the information that you will need to know about building, repairing, or troubleshooting your powerglide transmission including step by step instructions with illustrations on all critical clearances for racing.

1000 **\$17⁹⁵**

TRANSMISSION KITS



Powerglide Assembly Kit

As powerglide transmission supplies dwindle each year, the small parts become increasingly harder to find. Pistons, bolts, snap rings, shift linkage and other hard to find small parts found in this kit eliminate this troublesome search. This kit contains all of the extras needed to fully assemble a powerglide transmission, in addition to a new dual ring servo, servo spring and band adjustment screw.

95100 Powerglide Assembly Kit **\$225⁰⁰**



Transmission Overhaul Kits

MASTER KITS: BTE's master overhaul kits contain everything needed to rebuild and freshen your transmission: high performance clutches, seals, new bushings, paper/rubber kits, rings, filter, and reusable pan gaskets.

249000 Powerglide **\$122⁹⁵**
 249100 Wide Band & 10 Clutch Kit **\$262⁹⁵**

RACING KIT: This kit includes everything for a light freshen up: paper/ rubber kit, seals, and sealing rings.

248900 Powerglide **\$29⁹⁵**