



Performance Transmissions

For more modern rear wheel drive street and strip vehicles, BTE has a number of solutions available for most domestic applications. Using experience from racing applications, BTE can provide high quality and performance multi-speed, lock up, and overdrive transmissions and component parts.

ASSEMBLED 700R4 / 4L60E TRANSMISSIONS

Designed for high performance street and some strip usage, the 700R4 and 4L60E are choice lockup transmissions for GM-based applications. These transmissions can be ordered in a variety of ways for most applications from towing, to rock climbing, or pure drag racing. FEATURES: Manual/Automatic valve body, New performance clutches and bands, Dyno-tested.

700R4 Street / Strip, '84-'92

871000 **\$1450⁰⁰**

4L60E Street / Strip, '93-Up

871020 **\$1575⁹⁵**



ASSEMBLED C-4 TRANSMISSIONS*



For the blue-oval enthusiast, BTE offers a great selection of non-lockup transmissions. We have solutions for nearly all Ford applications, from 5.0s to new 5.4 modular setups. Call about our AOD and E40D units. *No bellhousing is included (contact BTE if you need a bellhousing). FEATURES: New performance clutches and bands, Dyno-tested.

C-4 Full Manual, '70-'82

422200 Case Fill **\$899⁹⁵**

422600 Pan Fill **\$899⁹⁵**

C-4 Manual / Automatic Super Street, '70-'82

421200 Case Fill **\$799⁹⁵**

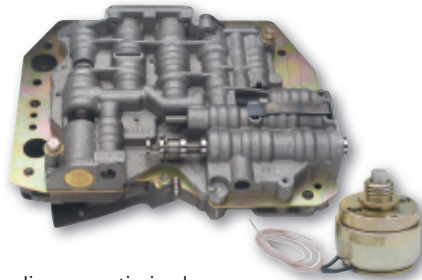
421600 Pan Fill **\$799⁹⁵**



Gear Sets

BTE offers several upgraded gear sets over standard stock installations. This is a required addition for high horsepower applications.

- 427500 C-4 Magnum Forward 6 Pinion Gear Set **\$235⁹⁵**
- 877100 700R4 / 4L60E 5 Pinion Front Gear Set **\$99⁹⁵**
- 878150 700R4 / 4L60E 5 Pinion Rear Gear Set **\$133⁹⁹**



Performance Valve Bodies

BTE's full manual and transbrake valve bodies are optimized for performance applications. These performance valve bodies are also tuned for additional line pressure, which is needed for clutch application in high power or heavy vehicles. Transbrake valve body kits include BTE's two wire solenoid.

- 421000 C-4 Full Manual, Reverse Shift **\$199⁹⁵**
- 421100 C-4 Super Street **\$165⁶⁵**
- 421500 C-4 Transbrake Replacement Solenoids **\$524⁹⁵**
\$94⁹⁹



Transmission Overhaul Kits

MASTER KITS: BTE's master overhaul kits contain everything needed to rebuild and freshen your transmission: high performance clutches, seals, new bushings, paper/rubber kits, rings, filter, and reusable pan gaskets.

- 429000 C-4 '67-'69 **\$112⁹⁵**
- 429500 C-4 '70-Up **\$112⁹⁵**
- 879000 700R4 27 Spline **\$149⁹⁵**
- 879100 700R4 '86-'92 30 Spline **\$149⁹⁵**
- 879101 4L60E '93-'03 30 Spline **\$159⁹⁵**

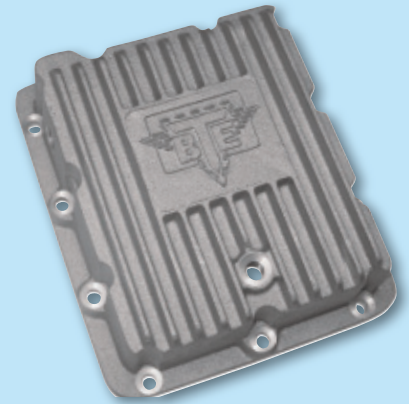
Servo Kits

To ensure proper shifts and to prevent internal leakage, BTE has several servo kits for your performance application. These billet servos correct bore wear and give stronger shifts.

- 428520 C-4 Billet Servo and Servo Cover **\$112⁹⁹**
- 878800 700R4 Corvette Servo **\$32⁹⁹**



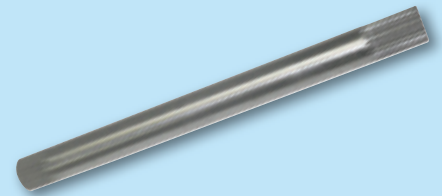
CASE UPGRADES



Aluminum Deep Pans

Cast aluminum deep pans add two extra quarts of transmission fluid, reduce heat retention, and increase the strength of the transmission case. Pans include gasket, bolts, and filter extension.

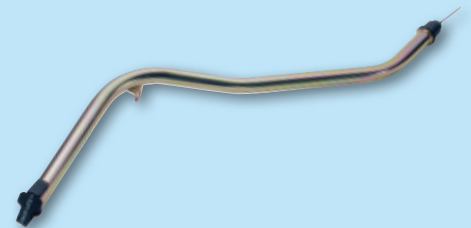
- 428000 C-4 Pan Fill **\$92⁹⁵**
- 428001 C-4 Case Fill **\$86⁹⁵**
- 878000 700R4 / 4L60E Deep Pan **\$149⁹⁵**



Input Shafts

Made from heat treated 4340 steel, these input shafts are a critical upgrade over stock input shafts when used in racing applications.

- 420100 C-4 Spline Input Shaft **\$149⁰⁰**



Locking Dipsticks

This locking dipstick and filler tube remain attached and locked under the most severe applications. The included "top hat" gasket is an improvement over OEM o-ring style sealants.

- 513800 C-4 Case Fill **\$34⁹⁵**
- 513850 C-4 Pan Fill **\$34⁹⁵**
- 813850 700R4 Dipstick **\$34⁹⁵**
- 873870 700R4 Flexible Dipstick Firewall Mount **\$59⁶⁹**