

CHASSIS & SUSPENSION

Brake Systems



DYNALITE DRAG RACE REAR AXLE KITS

Wilwood's Dynalite Drag Race Rear Axle Kits have set the standard for many years on all types of vehicles. Developments in design and manufacturing technology have driven an evolution that has generated the latest innovations in brake system components.




Forged Billet Dynalite FDL calipers, PolyMatrix brake pads, lightweight steel alloy rotors, machined aluminum rotor mounting hats, and a complete mounting system with grade 8 and aircraft quality hardware generate big stopping power with improved E.T.'s from lower rotating mass and overall weight savings.

12-BOLT CHEVY (STOCK C CLIP ONLY)

WIL140-0263	Offset 2.81"	\$486.95
-------------	--------------	----------

12 BOLT CHEVY (FOR C CLIP ELIMINATOR)

WIL140-4545	Offset 2.81"	\$486.95
-------------	--------------	----------

SMALL BEARING FORD

WIL140-0262	Offset 2.66"	\$486.95
-------------	--------------	----------

BIG BEARING FORD

WIL140-0261	Offset 2.36"	\$486.95
-------------	--------------	----------

WIL140-3623	Offset 2.50"	\$486.95
-------------	--------------	----------

BIG BEARING FORD (NEW STYLE)

WIL140-2119	Offset 2.50"	\$486.95
-------------	--------------	----------

LAMB / MARK WILLIAMS

WIL140-0265	Offset 2.81"	\$486.95
-------------	--------------	----------

LAMB / MARK WILLIAMS (.690" STUDS)

WIL140-5348	Offset 2.81"	\$486.95
-------------	--------------	----------

OLDS / PONTIAC

WIL140-0264	Offset 2.81"	\$486.95
-------------	--------------	----------

DYNALITE SINGLE DRAG RACE FRONT HUB KITS

Dynalite Single Drag Race Front Hub Kits are engineered for four-wheel disc brake equipped cars weighing less than 2400 pounds. Machined billet DLS calipers, forged billet hubs, lightweight steel alloy rotors, and PolyMatrix brake pads offer lasting performance with up to 50 pounds of weight savings off the front end.




DISC/DRUM

WIL140-1016	Camaro, 1967-1969	\$575.95
-------------	-------------------	----------

WIL140-1016	Chevelle, 1964-1972	\$575.95
-------------	---------------------	----------

WIL140-1016	Chevy II / Nova, 1964-1974	\$575.95
-------------	----------------------------	----------

WIL140-1016	El Camino, Sprint, 1964-1972	\$575.95
-------------	------------------------------	----------

WIL140-1016	Monte Carlo, 1970-1972	\$575.95
-------------	------------------------	----------

WIL140-1038	Monza, 1975-1975	\$649.95
-------------	------------------	----------

WIL140-1038	Vega, 1971-1977	\$649.95
-------------	-----------------	----------

WIL140-1012	Pinto, 1971-1980	\$575.95
-------------	------------------	----------

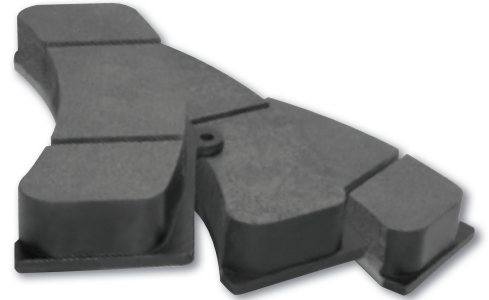
DISC

WIL140-1012	Mustang II, 1974-1978	\$575.95
-------------	-----------------------	----------



Polymatrix E Brake Pads

Wilwood brake pad compounds are the results of three decades of experience and continual development to provide optimized braking and driver feel for all types of motor sport and competition applications.



FEATURES

- Medium friction compound with the highest effective range in the medium temperature pad group.
- Smooth engagement with consistent response from a flat torque curve throughout its entire effective temperature range.
- Best overall wear properties in the medium temperature pad group.
- Beds quickly and provides fast response without excessive abrasion on iron or steel rotors.

APPLICATIONS

- Most dirt track applications including super late models, modifieds, and rear inboard sprints using vented iron rotors.
- Light to medium duty road racing and track day events.
- Drag racing with iron or steel rotors.
- Performance street category competition.

DYNALITE W/ COTTER PIN

15E-6096K	Pad Type 7112	\$63.95
-----------	---------------	---------

DYNALITE PRO SERIES FRONT HUB KITS

Dynalite Pro Series Front Hub Kits are engineered for a variety of competition and sports driving applications including muscle cars, hot rods, and heavy weight drag cars. Forged Billet Dynalite calipers, forged billet hubs, vented iron rotors, and PolyMatrix brake pads offer big stopping power in severe heat conditions with up to 35 pounds of weight savings off the front end.




DISC/DRUM

WIL140-2285	Camaro, 1967-1969	\$672.95
-------------	-------------------	----------

WIL140-2285	Chevelle, 1967-1972	\$672.95
-------------	---------------------	----------

WIL140-2285	Chevy II / Nova, 1967-1974	\$672.95
-------------	----------------------------	----------

WIL140-2129	Pinto, 1971-1980	\$682.95
-------------	------------------	----------

DISC

WIL140-2992	Camaro, 1982-1987	\$682.95
-------------	-------------------	----------

WIL140-2508	Chevy S10, 1982-1990	\$682.95
-------------	----------------------	----------

WIL140-2129	Mustang II, 1974-1978	\$682.95
-------------	-----------------------	----------

DISC BR SPINDLE ONLY

WIL140-3445	Camaro, 1970-1978	\$682.95
-------------	-------------------	----------

WIL140-8174	Camaro, 1979-1981	\$682.95
-------------	-------------------	----------

WIL140-3445	Chevelle, 1973-1977	\$682.95
-------------	---------------------	----------

WIL140-3445	Nova, 1975-1978	\$682.95
-------------	-----------------	----------

DRUM

WIL140-2285	Chevelle, Modified, 1964-1966	\$672.95
-------------	-------------------------------	----------

MASTER CYLINDERS

Wilwood High-Volume Aluminum Master Cylinders represent the latest refinements in brake pressure actuation and fluid control. Each master cylinder is high pressure die-cast from high-grade aluminum, fully machined, and assembled with exclusive features only available from Wilwood. Wilwood High-Volume aluminum master cylinders have the highest fluid capacity of any integral reservoir design. With a total capacity of 8.2 ounces, there is at least 26% more fluid than most competitive brands. More fluid volume means cooler temperatures and additional insurance for extreme conditions where high pad wear can compromise fluid levels during long events.




COMBINATION REMOTE

260-3376	7/8" Bore Size	\$66.95
----------	----------------	---------

260-3378	1" Bore Size	\$66.95
----------	--------------	---------

ALUMINUM/260

260-6764	3/4" Bore Size	\$49.95
----------	----------------	---------

260-6765	7/8" Bore Size	\$49.95
----------	----------------	---------

260-6766	1" Bore Size	\$49.95
----------	--------------	---------

TANDEM M/C / 260

260-4893	1 1/16" Bore Size	\$104.95
----------	-------------------	----------

260-4894	1 1/16" Bore Size	\$118.95
----------	-------------------	----------

PROPORTIONING VALVES

Compact and lightweight forged billet aluminum construction has made Wilwood's proportioning valves the best available. Pressure adjustments range from 100-1000 PSI and provide for a maximum decrease of 57% in line pressure. This adjustment lets you fine tune the front to rear braking balance by proportionately decreasing the rear (or in some cases the front) brake line pressure. They can also be used to adjust individual front wheel braking in dirt track applications.



WIL260-8419	knob style	\$41.95
WIL260-8420	lever style	\$83.95

RESIDUAL PRESSURE VALVES

These in-line pressure valves retain a minimum brake line pressure to help eliminate excessive pedal travel in both disc and drum brake systems.



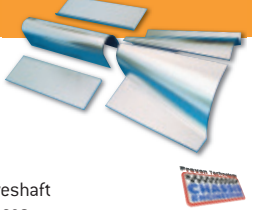
WIL260-1874	2 lb (blue)	\$17.95
WIL260-1876	10 lb (red)	\$17.95

Chassis Components



TRANSMISSION TUNNEL KIT

Our universal and Lenco trans tunnel kit can be easily modified to fit most chassis and transmissions. Includes drivers and passengers side tunnel halves, for easy access, driveshaft cover and matching floor pieces.



8020		\$169.95
------	--	----------

SPORTSMAN WHEEL WELLS

Specifically designed for use with our rear frame rail kits, sportsman wheel wells are 23" wide and 40" long. Our wheel wells are shipped unassembled via UPS. They are beaded for strength and clean finish and incorporate a "Pittsburgh" seam that allows for easy assembly.



3681	23" x 40" - .040" Aluminum (Pair)	\$149.95
3682	23" x 40" - .024" Steel (Pair)	\$94.95

Exterior & Accessories



ROLL BARS

All roll bars manufactured by Chassis Engineering are guaranteed to pass tech by NHRA and many other racing associations in the appropriate classes. Manufactured on state-of-the-art computer operated benders...our roll bars and cages feature smooth round bends without deflection in the tubing size or shape. Each roll bar or cage is bent specifically for your application insuring a quality bar that provides the best possible protection. We don't just send out a pile of bent tubes, all Chassis Engineering roll bar kits are delivered pre-notched with extra length needed for a closer fit. Our cages are a perfect match for our subframe kits.

8 POINT ROLL BAR

The minimum required for cars running from 11:00 to 11:99.



0500	1 3/4" x .134" mild steel	\$199.95
------	---------------------------	----------

12 POINT ROLL CAGE

Required by most racing associations for cars running 10.99 or quicker. All cages include a rear shock X-brace at no additional cost. Available in either mild steel or 4130 chrome moly.



0700	1 5/8" x .134" mild steel	\$389.95
------	---------------------------	----------

ADJUSTABLE ANTI-ROLL BAR

Designed to help control tire shake on a car that turns out of the gate rather than leaving straight by equalizing traction. Keeping the car level from side to side improves 60+ times and dramatically improves consistency. Perfect for faster bracket cars where body roll can be a problem. Includes 24" mounting tube, 28" cold drawn steel anti-roll bar, billet aluminum arms, adjuster links, rod ends, complete hardware and instructions.



3755		\$239.95
------	--	----------

ADJUSTABLE REAR SPOILER

A universal design that fits most applications. This spoiler measures 52" long and 12" wide and is easily adjustable for varying track conditions and speeds. Shipped unassembled the adjustable spoiler can easily be fitted for a custom installation. Constructed from .063 aluminum, kit includes aircraft fasteners, aluminum brackets, and adjustable strut rods with quick pins for easy adjustments.



8011		\$349.95
------	--	----------

Steering Components



71-72 Pinto Manual Rack & Pinion

This manual rack & pinion is designed to meet top chassis builders standards for a new drag race steering gear. Manufactured to be sleek, lightweight and durable using high-quality, aluminum castings and chromed plated steel center tube. This unit weighs only 12 lbs. with steering specifications of 3.75 turns lock-to-lock; rack travel 5.25"; overall length 45 1/2."



\$239⁹⁵

F/R 1501

Suspension Components



- Lifetime limited warranted components
- Matched components for value & performance
- Adjustable pro ladder bars
- Ladder bar cross member
- Diagonal link

Chassis Engineering has the right package to meet your needs and application. We've grouped our most popular suspension components to create suspension packages matched in performance and value. From daily drivers to all out race cars we've got a package that's perfect for your project and your budget.

32" DOUBLE ADJUSTABLE PRO LADDER BARS

All Chassis Engineering Ladder Bars are constructed from 1" x .156" wall D.O.M. mild steel tubing. Each bar is 3/4" directly threaded insuring maximum strength. At the front you'll find high quality 3/4" x 3/4" spherical rod ends (rather than the bind prone solid ends supplied by other manufacturers). At the rear are solid ends. For easy-accurate pinion angle adjustment the adjuster is located on the bottom bar. Rear housing brackets are precision stamped 1/4" mild steel, and tumbled for a clean smooth finish. Safety brackets are included at no extra cost. Best of all, every ladder bar is finished in a high gloss black powder coat that resists corrosion and looks great.



3607	Pair	\$299.95
------	------	----------

LADDER BAR CROSSMEMBERS



Ladder bar crossmembers not only provide the front ladder bar mounting point they also serve as a driveshaft safety loop and significantly add to chassis stiffness. Our five hole front brackets provide the adjustability you need to dial in the correct ladder bar angle. Round tube cross members are made from 1 3/4" x .134" wall mild steel and rectangular cross members are made from 2" x 3" x .083" mild steel. We offer widths to accommodate virtually any chassis and include ladder bar mounting brackets, hardware and instructions. High quality materials provide plenty of strength-backed by the Chassis Engineering "Lifetime" Warranty! Shipped Unwelded.

3718	Round 45"	\$62.50
3719	Round 60"	\$62.50
3819	2" x 3", 60"	\$97.95

STAGE I LADDER BAR KIT



3627	with 1 3/4" round cross member	\$442.95
3635	with 2" x 3" box cross member	\$477.95

CHASSIS & SUSPENSION

STAGE II LADDER BAR KIT



LADDER BAR SUSPENSION WITH SHOCKS

3634	with Strange Aluminum Coil overs	\$866.95
3633	with coil Spring Mounts	\$653.95

Springs sold separately.

Add \$23.00 for panhard bar.

Add \$33.00 for 2" x 3" cross member

STAGE III LADDER BAR KIT

This top of the line ladder bar subframe and suspension package has been available from us for years! It's hard to better the adjustable design that allows for even the largest of tires. Stage III is available in kit form or fully welded to fit your application. Chassis Engineering also has the wheel tubs, fuel cell, dual battery mounts as well as the rest of the components to finish off your back half to success.



COMPLETE LADDER BAR SUSPENSION SUBFRAME

3628	w/Strange All Aluminum Coil overs	\$1215.95
3630	w/Coil Spring (C/E 5076), Shocks	\$968.95

Springs sold separately. Rear End Housing Not Included.

BOLT-ON DIAGONAL LINK

Our most popular and economical diagonal link. Made from 3/4" x .156" mild steel and is 35" in length. Included are 1/2" misalignment spherical rod ends and complete mounting hardware and instructions.



3748	(5/8" - 3/4" mounting holes)	\$79.95
3750	(3/4" - 3/4" mounting holes)	\$79.95

Shock Mounts & Coil Springs



ECONOMY SPRING OVER SHOCK

Here's a low alternative to the more expensive coil-over systems. These coil spring mounts provide many of the same benefits at a fraction of the cost. Kit uses the same 12" x 2.50" ID springs as the Strange, or Hal Coil overs. An OEM style shock is mounted inside the spring and ride height is adjustable up to 6" of suspension travel for street or strip use. These kits are ideal for street rods, Pro Streeters or Sportsman racers. Delivered complete with upper mounts, adjustable lower mounts, shocks, hardware and complete instructions.



5076	Coil Spring and Shock Mounts (Pair)	\$188.95
------	-------------------------------------	----------

Springs sold separately.

ADJUSTABLE LOWER SHOCK MOUNT

An adjustable shock mount is essential on any coil over equipped car. Chassis Engineering adjustable lower mounts are the ideal way to mount the bottom end of any coil over. Our mounts are designed to be super strong, take up as little room as possible on the rear housing and offer up to 6" of ride height adjustment with the removal of just two bolts per side. Kit includes two housing brackets, four gold zinc plated "L" brackets that bolt to the housing brackets, 1/2" bolts and nuts with alignment bushings and instructions.

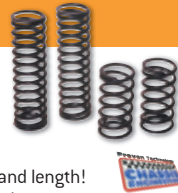


LOWER REAR SHOCK MOUNTS

3714	(Pair)	\$54.95
3720	Notched for Back Brace (Pair)	\$54.95

DRAG RACING COIL OVER SPRINGS

We stock the largest inventory of popular drag racing coil over springs in the country! Made from the highest quality silicon steel, these springs are guaranteed to be within two percent of stated rate and length! Our tech advisors have years of experience in recommending the proper spring rate for drag racing applications. All springs are black PVC coated for long lasting good looks.



FRONT - C/E STRUTS & KONI 7" X 2.5" I.D.

RATE LBS.	TOTAL WEIGHT ON FRONT WHEELS
200	600 - 800 lbs.
250	800 - 1000 lbs.
275	1000 - 1100 lbs.
300	1100 - 1200 lbs.
350	1200 - 1500 lbs.
400	1500 - 1800 lbs.
450	1800 - 2000 lbs.
500	2000 - 2300 lbs.
550	2300 - 2500 lbs.
650	2600 lbs. & up
65	Under 800 lbs.
80	800 /- 1000 lbs.

REAR - HAL, STRANGE & KONI 12" X 2.5" I.D.

RATE LBS.	TOTAL WEIGHT ON FRONT WHEELS
95	1000 - 1100 lbs.
110	1100 - 1200 lbs.
130	1200 - 1300 lbs.
140	1300 - 1400 lbs.
150	1500 - 1700 lbs.
170	1700 - 2300 lbs.
200	2300 - 2600 lbs.
250	2600 - 2900 lbs.
300	2900 - 3200 lbs.

3980	7" x 2.5" ID Springs (Pair)	\$81.00
3982	12" x 2.5" ID Springs (Pair)	\$81.00

Need Product Technical Support?
Email tech@bteracing.com

U-BEND DRIVE SHAFT LOOP

Our tubular drive shaft loop is designed for tube chassis cars. Kits include mounting posts, quick release pins and a 40" wide cross member for quick transmission removal.



4037	360" Loop, Sleeves & Pins	\$32.95
4035	U-Bend Loop, Sleeves, Pins & 40" x-member	\$54.95
4035-1	U-Bend Loop only	\$15.95
4036-1	360" Loop only	\$25.00

Shocks



MAGNUM SERIES COIL-OVER SHOCK

Competition Engineering's Rear Coil-Over Shocks are a part of our Magnum Series, a line of professional-grade products engineered for maximum performance and durability. They feature 12 settings, allowing you to tune the suspension from soft to firm with a simple turn of the knob.



- All-aluminum billet housing is CNC machined with a black anodized body.
- Spring seats are adjustable for preload and accept 2-1/2" i.d. springs.
- 5/8" hardened chrome piston rod provides superior strength.
- Advanced sealing reduces drag for faster reaction.
- Includes two 1" wide spherical mounting bearings with locking snap rings.
- 17" extended height; 13-3/4" to 14-1/4" recommended ride height; 12-3/4" compressed height.

COE2770	Rear coil-over shock absorber (One per package)	\$321.95
---------	---	----------

ADJUSTABLE DRAG SHOCKS

Competition Engineering's 3-Way Adjustable Drag Shocks are designed to allow the racer to dial-in the race car to meet changing track conditions. Shock valving plays a very important role in the way your car will perform both during initial launch and throughout the quarter mile. Front drag shocks are adjustable in ratios of 90/10, 80/20, and 60/40. Rear drag shocks are adjustable in ratios of 30/70, 40/60, and 50/50. These shocks are designed for drag race usage only.



FRONT DRAG SHOCK

Ext. Length: 14.10; Collapsed Length: 9.00; Diameter: 1.63	C2600	\$42.95
Ext. Length: 16.50; Collapsed Length: 11.00; Diameter: 1.63	C2605	\$42.95
Ext. Length: 15.34; Collapsed Length: 9.62; Diameter: 1.63	C2610	\$42.95
Ext. Length: 14.73; Collapsed Length: 9.63; Diameter: 2.0	C2615	\$54.95
Ext. Length: 17.31; Collapsed Length: 12.56; Diameter: 2.0	C2616	\$54.95
Ext. Length: 16.84; Collapsed Length: 10.37; Diameter: 1.63	C2620	\$42.95

Ext. Length: 15.02; Collapsed Length: 9.80; Diameter: 1.63	
C2630	\$42.95
Ext. Length: 13.86; Collapsed Length: 10.51; Diameter: 1.53	
C2639	\$66.95
Ext. Length: 14.34; Collapsed Length: 9.24; Diameter: 1.63	
C2640	\$42.95
Ext. Length: 17.22; Collapsed Length: 12.22; Diameter: 2.0	
C2645	\$56.95
Ext Length: 16.96; Collapsed Length: 12.21; Diameter: 2.0	
C2646	\$55.95
Ext. Length: 20.69; Collapsed Length: 15.95; Diameter: 2.05	
C2647 (NEW)	\$71.95

REAR DRAG SHOCK

Ext. Length: 21.69; Collapsed Length: 12.84; Diameter: 1.63	
C2700	\$42.95
Ext. Length: 19.50; Collapsed Length: 12.35; Diameter: 1.63	
C2705	\$42.95
Ext. Length: 22.43; Collapsed Length: 13.21; Diameter: 1.63	
C2710	\$42.95
Ext. Length: 22.87; Collapsed Length: 13.65; Diameter: 1.63	
C2720	\$42.95
Ext. Length: 23.62; Collapsed Length: 14.15; Diameter: 1.63	
C2730	\$42.95
Ext. Length: 24.50; Collapsed Length: 14.50; Diameter: 1.63	
C2735	\$42.95
Ext. Length: 20.16; Collapsed Length: 11.81; Diameter: 1.63	
C2740	\$42.95
Ext. Length: 21.65; Collapsed Length: 13.29; Diameter: 1.63	
C2750	\$42.95
Ext. Length: 16.41; Collapsed Length: 10.44; Diameter: 1.63	
C2755	\$46.95

QA1 STOCKER STAR SHOCKS

- Easy Bolt-In Installation
- Deflective Disc Valving – Advanced Shock Technology. Increased valving response, control and consistency.
- On-The-Car Valving Adjustment. Gone are the days of removing shocks to adjust valving – simply turn the knob.
- 5/8" Centerless Ground, Hard Chrome Plated Piston Rod. Precision surface eliminates flex, increasing valving consistency.
- Machined Aluminum Body. Bright anodized for unmatched durability and great appearance.
- Bright Anodized Body. Unmatched durability, ease of maintenance, show-winning appearance.
- Three Step Sealing System. Aerospace material. Exclusively engineered double lip seal with wiper eliminates seal drag and dirt intrusion.
- 100% Dyno Tested and Serialized. Assures consistency in production and performance.
- Shock Mounting Hardware. Bushing material exclusive to QA1 shocks, for both upper and lower mounts. Mounting hardware is zinc or chrome plated for durability and professional appearance.
- Polyurethane bushings standard



TC1914P	Chevy Camaro 67-69/Front	\$167.95
TC1953P	Chevy Camaro 67-69/Rear [w/SGL Leaf]	\$177.95
TC1958P	Chevy Camaro 70-81/Front	\$167.95
TC2109P	Chevy Camaro 70-81/Rear	\$187.95
TC1914P	Chevy Chevelle 68-83/Front	\$167.95
TC1661P	Chevy Chevelle 68-83/Rear	\$177.95
TC1914P	Chevy Nova 68-79/Front	\$167.95
TC1661P	Chevy Nova 68-79/Rear	\$177.95
TC1953P	Chevy II 62-67/Rear	\$177.95



Proma Star Single and Double Adjustable Shocks

Deflective Disc Valving – Advanced Shock Technology. Increased sensitivity in valving response, control and consistency.

- Precision Machined Piston with P.T.F.E. Piston Band Creates accurate piston to cylinder wall seal, improves valving consistency and increases durability.
- 5/8" Centerless Ground, Hard Chrome Plated, Solid Piston Rod. Precision surface eliminates piston rod flex, increasing valving consistency.
- Machined Aluminum Body. Bright anodized for unmatched durability and great appearance.
- Three Step Sealing System. Advanced aerospace material, exclusive double lip seal design and wiper seal eliminate seal drag and dirt intrusion.
- 100% Dyno Tested and Serialized. Assures consistency in production and performance.
- Shock Mounting Hardware. Exclusive Teflon®/Kevlar® race bearings for smooth, bind-free operation. Also available with polyurethane bushings.
- Spring Mounting Hardware Included. Aluminum spring cap, spring seat, spring seat washer and locking ring included.



DR3855B-2	Bearing, Ext Ht 11 1/8," Ride Ht 9 1/2 - 10," Comp Ht 8 5/8," Rec. Spring Length 7" (Pair)	\$368.95
DR4855B-2	Bearing, Ext Ht 14," Ride Ht 11 1/2 - 12," Comp Ht 10 1/8," Rec. Spring Length 9-10" (Pair)	\$368.95
DR5855B-2	Bearing, Ext Ht 17," Ride Ht 13 1/4 - 14," Comp Ht 11 5/8," Rec. Spring Length 12" (Pair)	\$368.95
DR7855B-2	Bearing, Ext Ht 18 3/4," Ride Ht 15 - 15 3/4," Comp Ht 12 1/2," Rec. Spring Length 14" (Pair)	\$368.95

Struts



90/10 DRAG STRUTS

Unlike so-called "racing" struts that use stock dampening valving, Competition Engineering's Drag Struts feature a true 90/10 ratio. This race-proven dampening allows the front end to left quickly for instant weight transfer to the rear tire. Plus the design provides increased resistance when the front end descends preventing the rear tires from unloading and maximizing traction.



FRONT DRAG STRUT

COE2801	82-92 Camaro	\$126.95
COE2806	79-93 Mustang	\$119.88

Wheelie Bars



50" WHEELIE BARS

Properly engineered and constructed wheelie bars are an essential chassis safety and tuning device on today's race cars. Comes complete with all mounting hardware, instructions and ultra tough urethane wheels. Comes assembled in black powder coat. Suitable for most sportsman and bracket cars.



3621	Black Powder Coat	\$389.95
------	-------------------	----------



PROFESSIONAL WHEEL-E-BARS™

Designed to withstand the abuse of drag racing, the Competition Engineering Professional Wheel-E-Bar™ Series is the choice of more racers than any other when design, quality and premium materials count. Each bar features upper spring adjusters made from 7075-T6 aluminum to allow for ease in preload adjustment. The lower struts are made from high strength 6061-T6 aluminum, enabling them to handle the forces applied to them without fatiguing. Each kit includes all the required fasteners as well as quick release pins to allow access to the rear end housing for jacking.



CHROME PLATED

C2016	w/natural finish aluminum components	\$299.95
C2036	w/black finish aluminum components	\$419.95
C2039	w/blue anodized aluminum components	\$349.95
C2040	w/red anodized aluminum components	\$349.95

Have a Question?

Give Us a Call @ 800.626.1828